



# GAT MONTHLY MEMBERSHIP PROGRESS REPORT

Results as of: 3/31/2023

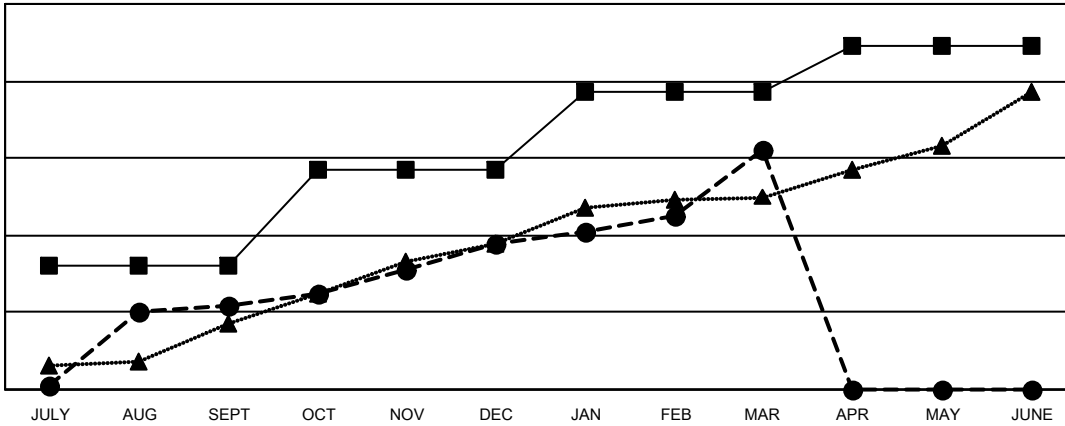
Multiple District 318

LOCATION: INDIA

Clubs			
RESULTS FOR 2022-2023			
QUARTER	NEW CLUB GOAL	NEW CLUBS	DROPPED CLUBS
JULY/AUG/SEPT	32	22	3
OCT/NOV/DEC	25	16	22
JAN/FEB/MAR	20	24	6
APR/MAY/JUNE	12	0	0

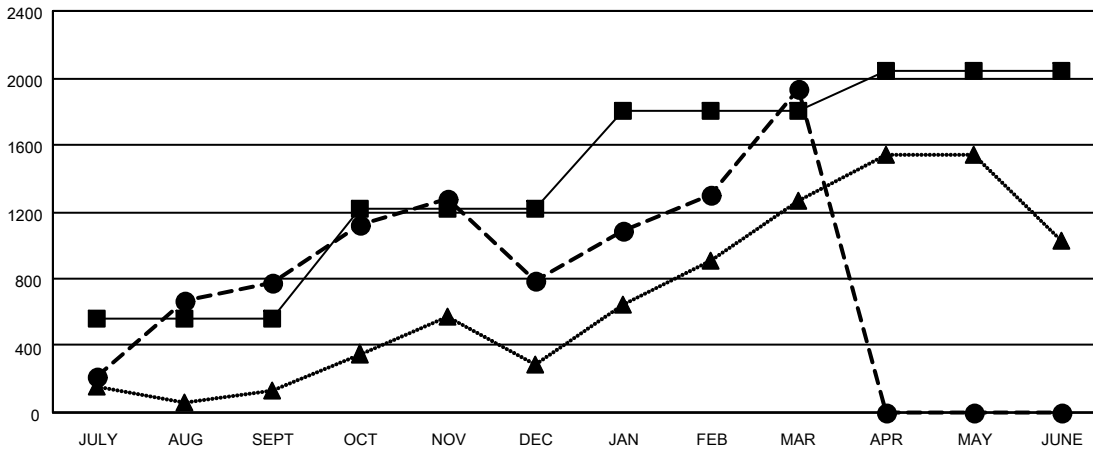
Members			
RESULTS FOR 2022-2023			
QUARTER	MEMBER GROWTH NET GOAL	MEMBER GROWTH ACTUAL	DROPPED MEMBERS ACTUAL (including transfers)
JULY/AUG/SEPT	560	1,361	538
OCT/NOV/DEC	655	1,360	1,259
JAN/FEB/MAR	590	1,572	355
APR/MAY/JUNE	240	0	0

GOALS AND ACTUAL NEW CLUBS CUMULATIVE



- - CURRENT YEAR GOALS FOR NEW CLUBS
- - CURRENT YEAR ACTUAL NEW CLUBS
- ▲ - LAST YEAR ACTUAL NEW CLUBS

GOALS AND ACTUAL MEMBERS CUMULATIVE



- - MEMBER GROWTH NET GOAL
- - MEMBER GROWTH ACTUAL
- ▲ - LAST YEAR MEMBERSHIP ACTUAL

DROPPED CLUBS: 31	
<b>DROPPED MEMBERS</b>	
DECEASED	89
CLUB CANCELLED	557
OTHER	1,506
<b>TOTAL</b>	<b>2,152</b>

522 CLUBS OF 822 ADDED 1 OR MORE NEW MEMBERS

[CLICK HERE FOR CUMULATIVE MEMBERSHIP DATA](#)

GENDER DISTRIBUTION	
MALE	21,629 (80.18%)
FEMALE	5,346 (19.82%)
NON BINARY	1 (0.00%)
PREFER NOT TO ANSWER	1 (0.00%)
<b>TOTAL FAMILY UNIT MEMBERS</b>	<b>9,466</b>
<b>FAMILY MEMBERS PAYING HALF DUES</b>	<b>5,056</b>